

Worldwide Capability  
Engineering Expertise  
Leading Edge Technology  
Award Winning Support  
Our Commitment to Quality

**Your one source for Ethernet Connectivity**



**Modular Jacks**

**ARJ45® Category 7a**

**Modular Plugs**

**MRJ21 Cables & Patch Panels**

**RJ *point five* Connector**

**Harmonica/Stacked Jacks**

# Stewart Connector Focus Catalog

ethernet connectivity solutions

### **Company Profile**

A NASDAQ company (BELFA & BELFB), Bel was founded in 1949 and is headquartered in Jersey City, New Jersey. Bel helps make global connectivity a reality by manufacturing electronic components for the computer, networking and telecommunication industries. Partnered with the leaders in these markets, we develop new products for emerging technologies that enable high speed communication. Our expanding portfolio includes a range of complementary products from circuit protection devices to power conversion modules, transformers and connector modules, to integrated line interface products. For over sixty years, we've used our superior, high-volume manufacturing techniques to deliver quality products to the global marketplace. Bel employs more than 10,000 people around the world with facilities in North America, Asia and Europe.

Bel Stewart Connector portfolio of products include one of the broadest ranges of Ethernet connectivity. Our interconnect products includes passive jacks, plugs and cable assemblies that provide connectivity in networking equipment. Modular plugs and cable assemblies are used within the structured cabling system, known as premise wiring. All connector products are designed to meet current performance standards including Category 6a regulations for Gigabit Ethernet and 10Gigabit Ethernet applications. Our MagJack® products include a comprehensive line of single and multi-port RJ-45 connectors with integrated magnetic for 10/100/1000Base-T applications.

### **RoHS Update**

Bel is committed to the elimination of lead and other banned substances from our products. Significant effort has been directed towards compliance with European Directive 2002/95/EC and all Bel Power products in this catalog now conform to this directive although select products designed specifically for network equipment and/or file server applications make use of the exemption for lead in solder for electrical terminations.

Consult data sheets for specific compliance information. RoHS compliant products are marked with the logo shown here. In addition, Bel also monitors other legislative requirements with potential impact to the use of banned substances in electronic products. We continue to pursue the use of alternative (greener) manufacturing methods and materials for our products.



## Your one source for ethernet connectivity

### Single Port Right Angle Modular Jacks

SS-60000	Page 4
SS-60300	Page 4
SS-64100	Page 4
SS-60800	Page 4
SS-70000	Page 4
SS-70100	Page 4

### Single Port Vertical / 45 Degree Modular Jacks

SS-60000	Page 5
SS-60300	Page 5
SS-65000	Page 5
SS-71100	Page 5
SS-71800	Page 5

### ARJ45® Category 7a

CA76	Page 6
CA77	Page 6
SS-77100	Page 6

### MRJ21 Cables Assemblies

MRJXXXX	Page 7
---------	--------

### MRJ21 48 Position Patch Panels

ASY2100	Page 8
---------	--------

### Modular Plugs

940-SP	Page 9
SS-37000	Page 9
SS-37200	Page 9
SS-39100	Page 9
SS-39200	Page 9

### EPP-918A Protective Sealant

SS60000	Page 10
SS64800	Page 10
SS65100	Page 10
SS66800	Page 10
SS71800	Page 10

### RJ point five Cable Assemblies and Connectors

RJP500	Page 11
--------	---------

### Harmonica – Ganged Jacks

SS-66400	Page 12
SS66800	Page 12
SS71800	Page 12

### Stacked Jacks

SS-73100	Page 13
SS-73800	Page 13
SS-76800	Page 13

### Website Overview

Stewart Connector Landing Page	Page 14
Stewart Connector Product Page	Page 15

**Single Port Right Angle Modular Jacks** **RoHS Compliant**

**Specifications / Design Features**

- Housing Material: UL 94V-0 rated glass -filled thermoplastic
- Contact Material: Copper Alloy
- Contact Plating: Selective gold plating in the contact interface
- Current Rating: 1.5 A (maximum) @ 25° C
- Voltage Rating: 150 VAC (maximum)



**Description**

Stewart Connector single port modular jacks are designed to meet the demanding requirements of high-performance communication environments including the increasing harsh environments that mobile electronics must operate in. Available in a wide variety of height configurations, there is a Bel Stewart single port right angle, vertical, angled jack that will provide the versatility and reliable solution for your networking or mobile applications. All of the Bel Stewart single port modular jacks can be equipped with EPP-918A contact dressing to increase the durability of the contacts to withstand heavy insertions and extractions of the mating plugs and provide increased protection in harsh environments.

**How to Order Single Port Right Angle Modular Jacks**

Part Number	Performance	Contacts	Shield	Shield Type	Orientation
SS-60300-010	10G	8	Yes	PG4	Horizontal (90)
SS-60300-002	CAT6a	8	Yes	PG4	Horizontal (90)
SS-60300-004	CAT6a	8	Yes	NF	Horizontal (90)
SS-60000-009	CAT6	8	Yes	NF	Horizontal (90)
SS-60000-010	CAT6	8	No		Horizontal (90)
SS-64100-082	Standard	10	Yes	NF	Horizontal (90)
SS-641010-NF-A115	Standard	10	No		Horizontal (90)
SS-6488-NF	Standard	8	No		Horizontal (90)
SS-6488S-A-NF	Standard	8	Yes	NF	Horizontal (90)
SS-700810-NF	Standard	8	No		Horizontal (90)
SS70100-041F	Standard	8	Yes	PG4	Horizontal (90)

Custom designs are available on request. Email [techhelp@belf.com](mailto:techhelp@belf.com) to submit your specific application needs. Data sheets with electrical and mechanical specifications are available at [www.belstewart.com](http://www.belstewart.com)

[www.belstewart.com](http://www.belstewart.com)

## Single Port Vertical / 45 Degree Modular Jacks RoHS Compliant

### Specifications / Design Features

- Housing Material: UL 94V-0 rated glass -filled thermoplastic
- Contact Material: Copper Alloy
- Contact Plating: Selective gold plating in the contact interface
- Current Rating: 1.5 A (maximum) @ 25° C
- Voltage Rating: 150 VAC (maximum)



### Description

Stewart Connector single port modular jacks are designed to meet the demanding requirements of high-performance communication environments including the increasing harsh environments that mobile electronics must operate in. Available in a wide variety of height configurations, there is a Bel Stewart single port right angle, vertical, angled jack that will provide the versatility and reliable solution for your networking or mobile applications. All of the Bel Stewart single port modular jacks can be equipped with EPP-918A contact dressing to increase the durability of the contacts to withstand heavy insertions and extractions of the mating plugs and provide increased protection in harsh environments.

### How to Order Single Port Vertical / 45 Degree Modular Jacks

Part Number	Performance	Contacts	Shield	Shield Type	Orientation
SS-60300-014	CAT6a	8	Yes	PG4	Vertical (180)
SS-60300-016	CAT6a	8	Yes	NF	Vertical (180)
SS-60300-023	CAT6a	8	Yes	PG4	Angle (45)
SS-60000-007	CAT6	8	No		Vertical (180)
SS-60000-008	CAT6	8	Yes	NF	Vertical (180)
SS-60000-014	CAT6	8	No		Angle (45)
SS-71100-001	CAT5e	8	Yes	NF	Angle (45)
SS71800-027F	CAT5e	8	Yes	NF	Vertical (180)
SS-7188V-A-NF	CAT5e	8	No		Vertical (180)
SS-650810-A-NF	Standard	8	No		Vertical (180)
SS-650810S-A-NF-50	Standard	8	Yes	NF	Vertical (180)

Custom designs are available on request. Email [techhelp@belf.com](mailto:techhelp@belf.com) to submit your specific application needs. Data sheets with electrical and mechanical specifications are available at [www.belstewart.com](http://www.belstewart.com)

**ARJ45® Category 7a** **RoHS Compliant**

**Specifications / Design Features**

- Cable and jack connector system designed for freq. up to & beyond 1,000 MHz
- Interface compatible with Nexans GG45 Connector System
- Patented plug design allows for port density equivalent to standard RJ45 connectors
- Plug design includes integral slim line strain relief with built in latch protection
- Uses data pair isolation technology to achieve high frequency performance
- Look and feel of an RJ45 connector but with beyond 10GBase-T performance capabilities



**Description**

The ARJ45® connector system is Stewart Connector’s new family of products for Category 7 and Category 7a premise wiring systems deployed in 10Gigabit Ethernet and higher speed data transmission environments. This connector family consists of a cable-mounted plug and a single-port, PCB-mounted jack designed to meet Category 7a performance standards up to 1000 MHz as defined by the IEC60603-7-71. Additionally, the ARJ45 connector system can be used as a high speed replacement for closed loop applications currently using less economical connector types.

Stewart Connector’s ARJ45 connector systems provide a competitive advantage in that they are built on the proven reliability of standard RJ45 interface mechanics which have been enhanced to support increased Category 7a data speeds. In addition, the ARJ45 connectors are interface-compatible with the Nexans’ GG45 connector system.

**How to Order ARJ45® CAT7a Cables**

Part Number	Performance	Length	Conn End A	Conn End B	Cable Rating
CA77-001M0-2	CAT7a	1 Meter	ARJ45	ARJ45	LSZH
CA77-002M0-2	CAT7a	2 Meter	ARJ45	ARJ45	LSZH
CA77-003M0-2	CAT7a	3 Meter	ARJ45	ARJ45	LSZH
CA77-005M0-2	CAT7a	5 Meter	ARJ45	ARJ45	LSZH
CA76-001M0-2	CAT6a	1 Meter	ARJ45	RJ-45	LSZH
CA76-002M0-2	CAT6a	2 Meter	ARJ45	RJ-45	LSZH
CA76-003M0-2	CAT6a	3 meter	ARJ45	RJ-45	LSZH
CA76-005M0-2	CAT6a	5 Meter	ARJ45	RJ-45	LSZH

**How to Order ARJ45® CAT7a Connectors**

Part Number	Performance	Contacts	Shield Type	Orientation	Port Opening
SS-77100-004	CAT7a	8	PG4	Horizontal (90)	Tab Up

[www.belstewart.com](http://www.belstewart.com)

## MRJ21 Cables Assemblies RoHS Compliant

### Specifications / Design Features

- Dense, Telco-style, double -bladed design allows 1.5 to 3 times the port density of 2x6 modular RJ45 stacked jacks
- Three times the port density of RJ21 connectors
- Jackscrews for positive latching and secure cable retention
- Fully shielded to reduce EMI emissions
- Robust receptacle board lock design for superior PCB strain relief
- Cable exit options include 180 degree straight and 45 degrees left or right



### Description

Bel Stewart’s MRJ21 cable assembly products are designed to support increased patch panel density in telecom and premise wiring applications. This modular cabling platform supports network applications such as gigabit Ethernet, Voice over Internet Protocol (VoIP), and Power over Ethernet (PoE). Cable connection options include left and right 45 degree exits as well as a 180 degree straight cable exit to facilitate various routing schemes to component racks.

Designed with a die cast backshell for shielding applications, Bel Stewart’s MRJ21 cable assemblies are durability tested to 500 cycles to insure unsurpassed quality and performance. Robust jackscrews provide a secure cable connection while the sturdy boardlock design allows superior PCB strain relief.

### Technical Support

Stewart Connector’s application and design engineers are ready to help with your next Ethernet connectivity solution. Our expertise designing and manufacturing both passive and active connectors as well as premise wiring solutions ensures a prompt solution to your unique requirements and application needs.

### How to Order MRJ21 Cable Assemblies

Part Number*	Description	Cable Type	Shielding
MRJxxxxAF-A	6 RJ45 Plugs to MRJ21 Angled	CMR	Unshielded
MRJxxxxDD-A	MRJ21 Straight to MRJ21 Straight	CMR	Unshielded
MRJxxxxAD-A	6 RJ45 Plugs to MRJ21 Straight	CMR	Unshielded
MRJxxxxDF-A	MRJ21 Straight to MRJ21 Angled	CMR	Unshielded
MRJxxxxAF-C	6 RJ45 Plugs to MRJ21 Angled	CMP	Unshielded
MRJxxxxDD-C	MRJ21 Straight to MRJ21 Straight	CMP	Unshielded
MRJxxxxAD-C	6 RJ45 Plugs to MRJ21 Straight	CMP	Unshielded
MRJxxxxDF-C	MRJ21 Straight to MRJ21 Angled	CMP	Unshielded

\* xxxx denotes desired cable length from 0.5 to 100.0 meters, in 0.5 meter increments. Typical part numbers are listed. For configurations not shown here, please consult factory.

Custom designs are available on request. Email [techhelp@belf.com](mailto:techhelp@belf.com) to submit your specific application needs. Data sheets with electrical and mechanical specifications are available at [www.belstewart.com](http://www.belstewart.com)

MRJ21 is a trademark owned by TE Connectivity used here under license

[www.belstewart.com](http://www.belstewart.com)

**MRJ21 48 Position Patch Panels** **RoHS Compliant**

**Specifications / Design Features**

- Provides a transition point from MRJ21 to RJ45 connectivity
- Versions available to support Gigabit Ethernet
- Versions available to support 10/100 Base-T
- Accommodates shielded and unshielded cabling solutions
- 19" rack mounted
- 1 RU (Rack Unit) High
- 48 port
- UL listed



**Description**

The MRJ21 Patch Panel is a high density cabling device which transitions MRJ21 connectivity into traditional RJ45 ports. The demand for this product arises out of the fact that the MRJ21 connector is a high density 24 pair connector used on new networking and telecommunications equipment. Very often, this new equipment must interface with existing infrastructure which consists of RJ45 connectivity, and the MRJ21 patch panel allows for an organized transition point for this interface. The product can also be used in conjunction with MRJ21 cable assemblies to create high density, low profile, pre-terminated Category 5e permanent links. The product is available in 48 port versions for Gigabit Ethernet and 10/100 Base-T which fit into a standard 19" rack.

**How to Order MRJ21 48 Position Patch Panels**

Part Number	Performance	Shield	Ports	Package	Profile
ASY21000-006	10/100/1000 BASE-T	Yes	48	19 inch	1 RU
ASY21000-005	10/100 BASE-T	Yes	48	19 inch	1 RU

Custom designs are available on request. Email [techhelp@belf.com](mailto:techhelp@belf.com) to submit your specific application needs. Data sheets with electrical and mechanical specifications are available at [www.belstewart.com](http://www.belstewart.com)

**Technical Support**

Stewart Connector’s application and design engineers are ready to help with your next Ethernet connectivity solution. Our expertise designing and manufacturing both passive and active connectors as well as premise wiring solutions ensures a prompt solution to your unique requirements and application needs.



## Modular Plugs RoHS Compliant

### Specifications / Design Features

- Electro-polished contact designs to accommodate solid and stranded conductors
- Performance levels from CAT3 thru CAT6a
- Wire management systems to improve plug assembly and performance
- Available in 4 through 10 position selectively loaded contact configurations
- Numerous keying options available on select models
- Strain relief boots with latch protection available on certain configurations



### Description

With an industry leading array of part number configurations available, Stewart Connector has an RJ45 modular plug available for your application. The product family is led by next generation shielded and unshielded CAT6a plugs which have wire management systems to provide reliable patch cord assemblies required in 10GBase-T applications. If you need port density, Stewart Connector offers mod plugs with slim line boots and latch protection to work in today’s highest density Gigabit Ethernet devices. In addition, Stewart offers numerous modular plugs with keying for use in proprietary communications systems where plug to jack mate-ability needs to be controlled. Designed to exceed appropriate TIA-568 and IEC 60603-7 mechanical and electrical performance specifications you can count on Stewart Connector’s plug to keep your network up and running.

### How to Order Modular Plugs

Part Number	Performance	Contacts	Shield	Conductor Size	Cable Type
SS-39100-030	CAT6a	8	No	.033”-.037” (0.84mm-0.94mm)	.235” max (5.97mm max)
SS-39200-020	CAT6a	8	Yes	.036”-.042” (0.91mm-1.07mm)	.220”-.240” (5.59mm-6.10mm)
SS-39100-008	CAT6	8	No	.036”-.042” (0.91mm-1.07mm)	.220”-.230” (5.59mm-5.84mm)
SS-39100-021	CAT6	8	No	.036”-.042” (0.91mm-1.07mm)	.235” max (5.97mm max)
SS-39200-011	CAT6	8	Yes	.036”-.042” (0.91mm-1.07mm)	.232”-.248” (5.89mm-6.30mm)
SS-39200-019	CAT6	8	Yes	.036”-.042” (0.91mm-1.07mm)	.270”-.295” (6.86mm-7.49mm)
SS-37000-007	CAT5e	8	No	.036”-.042” (0.91mm-1.07mm)	.235” max (5.97mm max)
SS-37200-028	CAT5e	8	Yes	.036”-.042” (0.91mm-1.07mm)	.235” max (5.97mm max)
940-SP-301010R	Standard	10	No	.032”-.038” (0.81mm-0.97mm)	.235” max (5.97mm max)
940-SP-3088R-A133	Standard	8	No	.034”-.040” (0.86mm-1.02mm)	.235” max (5.97mm max)
940-SP-360808-A161	Standard	8	Yes	.032”-.038” (0.81mm-0.97mm)	.180”-.230” (4.57mm-5.84mm)

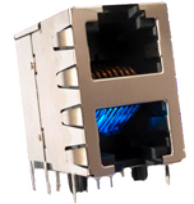
Custom designs are available on request. Email [techhelp@belf.com](mailto:techhelp@belf.com) to submit your specific application needs. Data sheets with electrical and mechanical specifications are available at [www.belstewart.com](http://www.belstewart.com)

[www.belstewart.com](http://www.belstewart.com)

**EPP-918A Protective Sealant** **RoHS Compliant**

**Specifications / Design Features**

- Improves durability and reliability for RJ11 and RJ45 modular jacks
- Helps prevent corrosion from harsh environmental conditions
- Withstands high temperature soldering (in excess of 260° C for 10 seconds)
- Low Level Contact Resistance testing to 10K cycles with no measurable change to gold plated contacts
- Contains a UV tracer for visible inspection of the EPP-918A coating on the contacts
- EPP-918A contact protectant can be used with any Bel Stewart jack to increase durability and reliability



**Description**

Bel Stewart’s EPP-918A protectant improves product reliability by providing an unprecedented level of defense against harsh environmental conditions. In addition to providing superior moisture, humidity, and corrosion resistance, EPP-918A also shields against wear due to repetitive mating/un-mating forces.

By guarding electronic connectors with this contact dressing, EPP-918A prolongs the life of contacts within RJ11 and RJ45 jacks exposed to extreme environmental conditions. Once applied (during our manufacturing process), EPP-918A will not migrate – it adheres to the contacts instantly and remains intact without the need for additional tape, mechanical barriers, or cure time. This characteristic eliminates the added expense that other barrier methods entail.

EPP-918A is useful in any application, static or mobile, involving harsh environmental conditions and /or a very high number of mating cycles. Bel’s EPP-918A environmental protectant is RoHS compliant and can be used with virtually any Bel Stewart connector product to increase durability and reliability.

**How to Order Connectors with Protective Sealant**

Part Number	Performance	Contacts	Shield	Shield Type	Ports	Orientation
SS60000-009G	CAT6	8	Yes	NF	1	Horizontal (90)
SS71800-019G	CAT5e	8	Yes	PG4	1	Horizontal (90)
SS71800-104G	CAT5e	8	Yes	PG4	1	Horizontal (90)
SS64800-008G	Standard	8	No		1	Horizontal (90)
SS64800-057G	Standard	8	Yes	PG4	1	Horizontal (90)
SS65100-024G	Standard	8	Yes	NF	1	Vertical (180)
SS66800-036G	Standard	8	No		8	Horizontal (90)

Custom designs are available on request. Email [techhelp@belf.com](mailto:techhelp@belf.com) to submit your specific application needs. Data sheets with electrical and mechanical specifications are available at [www.belstewart.com](http://www.belstewart.com)

[www.belstewart.com](http://www.belstewart.com)

## RJ point five Cable Assemblies and Connectors RoHS Compliant

### Specifications / Design Features

- Designed for up to CAT5e applications, this system provides nearly double the port density when compared to a standard RJ45 Ethernet link
- Plug release pull tab readily accessible for ease of removal from anywhere on the receptacle
- LED light travels through the plug via fiber optic light pipes
- Contains an integrated cable strain relief and plug shield
- Modular receptacle design allows for quick and easy deployment of product extensions



### Description

Stewart Connector’s RJ point five connector system, the next generation Ethernet link, provides nearly double the port density when compared to standard RJ45 connector solutions. Ideal for OEM’s seeking to increase density while also reducing the cost-per-port price point. The RJ point five cable system provides the convenience of a single connector per channel for maximum port flexibility and efficiency. This connector system currently supports Gigabit Ethernet speeds for CAT5e cabling and coupled with Bel’s new single port PCB connector designs support PoE Plus and provide a migration path to 10GBase-T over CAT6a applications. Especially useful in mobile, handheld, and remote application such as small cells (femto cells).

### How to Order RJ point five Cable Assemblies

Part Number	Performance	Shield	Conn End A	Conn End B	Wiring Pattern	Length
RJP50030AA-A	CAT5e	No	RJ point five Plug	RJ point five Plug	Standard	3.0 meters
RJP50030AB-A	CAT5e	No	RJ point five Plug	RJ-45 Plug, Unshielded	Standard	3.0 meters
RJP50030AX-A	CAT5e	No	RJ point five Plug	RJ point five Plug	Cross-Over	3.0 meters
RJP50050AA-A	CAT5e	No	RJ point five Plug	RJ point five Plug	Standard	5.0 meters
RJP50050AB-A	CAT5e	No	RJ point five Plug	RJ-45 Plug, Unshielded	Standard	5.0 meters
RJP50050AX-A	CAT5e	No	RJ point five Plug	RJ point five Plug	Cross-Over	5.0 meters
RJP50075AA-A	CAT5e	No	RJ point five Plug	RJ point five Plug	Standard	7.5 meters
RJP50075AB-A	CAT5e	No	RJ point five Plug	RJ-45 Plug, Unshielded	Standard	7.5 meters
RJP50075AX-A	CAT5e	No	RJ point five Plug	RJ point five Plug	Cross-Over	7.5 meters

### How to Order RJ point five Connectors

Part Number	Performance	Shield	Shield Type
RJP5-10-0001	CAT5e	No	
RJP5-10-0002	CAT5e	Yes	NF
RJP5-10-0003	CAT5e	Yes	PG
RJP5-10-0004	CAT5e	Yes	PG4

### How to Order RJ point five Loop Backs

Part Number	Performance	Shield
RJP5-16-0001	CAT5e	No

RJ point five is a trademark owned by TE Connectivity used here under license

[www.belstewart.com](http://www.belstewart.com)

**Harmonica – Ganged Jacks** **RoHS Compliant**

**Specifications / Design Features**

- CAT3 to CAT5e connectors are available in shielded and unshielded configurations to support Gigabit networks
- Provides 100 g of Contact Normal Force (minimum)
- Jack dimensions meet FCC requirements when plated with 50 microinches of gold
- Jacks are UL approved and DUXR2 and DUXR8 certified and RoHS compliant
- Available in high temperature plastics to meet new manufacturing requirements



**Description**

Stewart Connector offers CAT3 and CAT5e Harmonica Jacks. Our space-saving modular Harmonica jacks offer the most features for the maximum reliability and performance you need for today’s integrated data systems from the central office all the way through to your mobile applications. Our enhanced shielding provides optimum protection against EMI, and our unique panel tabs provide a high normal force for superior shielding effectiveness. The longer springs allow repeated insertions /withdrawals from a panel, and prevent “fish hooking” on the panel during insertion. All of the Bel Stewart Harmonica style modular jacks can be equipped with EPP-918A contact dressing to increase the durability of the contacts to withstand heavy insertions and extractions of the mating plugs and provide increased protection in harsh environments.

**How to Order Harmonica Jacks**

Part Number	Performance	Shield	Shield Type	Ports	Port Opening
SS71800-035F	CAT5e	Yes	PG4	2	Tab Down
SS71800-041F	CAT5e	Yes	PG4	4	Tab Down
SS71800-044F	CAT5e	Yes	PG4	4	Tab Down
SS-718804-NF	CAT5e	No		4	Tab Down
SS-718804S-A-PG4-BA	CAT5e	Yes	PG4	4	Tab Down
SS71800-095F	CAT5e	Yes	PG4	8	Tab Down
SS-664602S-A-PG4-AC-50	Standard	Yes	PG4	2	Tab Down
SS66800-014F	Standard	Yes	NF	3	Tab Down
SS-664604S-A-PG4-AC-50	Standard	Yes	PG4	4	Tab Down
SS-668804S-A-NF	Standard	Yes	NF	4	Tab Down
SS-668806-NF	Standard	No		6	Tab Down
SS-668806S-A-PG4-AC	Standard	Yes	PG4	6	Tab Down
SS-668808-NF	Standard	No		8	Tab Down

Custom designs are available on request. Email [techhelp@belf.com](mailto:techhelp@belf.com) to submit your specific application needs. Data sheets with electrical and mechanical specifications are available at [www.belstewart.com](http://www.belstewart.com)

**[www.belstewart.com](http://www.belstewart.com)**

## Stacked Jacks RoHS Compliant

### Specifications / Design Features

- CAT3 to CAT5e connectors are available in shielded and unshielded configurations to support Gigabit networks
- Provides 100 g of Contact Normal Force (minimum)
- Jack dimensions meet FCC requirements when plated with 50 microinches of gold
- Jacks are UL approved and DUXR2 and DUXR8 certified
- Meets RoHS and REACH requirements
- Plastics are high temperature to meet new manufacturing requirements



### Description

Stewart Connector offers CAT3 and CAT5e StackJacks. Our space-saving StackJack modular jacks offer the most features for the maximum reliability and performance you need for today’s integrated data systems from the central office all the way through to your mobile applications. Our enhanced shielding provides optimum protection against EMI, and our unique panel tabs provide a high normal force for superior shielding effectiveness. The longer springs allow repeated insertions /withdrawals from a panel, and prevent “fish hooking” on the panel during insertion. All of the Bel Stewart StackJack modular jacks can be equipped with EPP-918A contact dressing to increase the durability of the contacts to withstand heavy insertions and extractions of the mating plugs and provide increased protection in harsh environments.

### How to Order Stacked Jacks

Part Number	Performance	Shield	Shield Type	Ports	Rear Solder Tails
SS-73100-009	CAT5e	Yes	NF	4X4	Off Center
SS-73100-013	CAT5e	No		4X4	
SS73100-060F	CAT5e	Yes	PG4	6X6	On Center
SS-73100-070	CAT5e	No		6X6	
SS-73100-030	CAT5e	No		8x8	
SS73100-047F	CAT5e	Yes	PG4	8X8	On Center
SS-73800-044	Standard	Yes	PG4	1X1	None
SS-7388H11-NF-50	Standard	No		1X1	
SS-7388H11S-NF-50	Standard	Yes	NF	1X1	None
SS-7388H22-NF-50	Standard	No		2X2	
SS-7388H22S-PG4-AC-50	Standard	Yes	PG4	2X2	Off Center
SS-76800-006	Standard	Yes	NF	1 RJ45/2 USB	None

Custom designs are available on request. Email [techhelp@belf.com](mailto:techhelp@belf.com) to submit your specific application needs. Data sheets with electrical and mechanical specifications are available at [www.belstewart.com](http://www.belstewart.com)

[www.belstewart.com](http://www.belstewart.com)

**Stewart Connector Landing Page** **RoHS Compliant**

**Website Features**

1. Stewart Connector capabilities page
2. Find your nearest technical field sales representative
3. View larger product image
4. At-A-Glance Catalog – Downloadable in PDFs
5. Click on image for product page, searchable configurator and...available stock



The screenshot shows the Stewart Connector website landing page. At the top, there is a navigation bar with links: Home, Divisions/Brands, Contact Us, Library, Representative, Capabilities, Stock Check, and Request Information. A search bar is located on the right side of the navigation bar. The main content area is titled "Stewart Connector – Ethernet Connectivity" and includes a paragraph describing the product portfolio. Below this is a grid of product categories, each with a representative image and a title: MagJacks, Modular Plugs, Vertical Jacks, ARJ45™ CAT7a, RJ point five System, MRJ21 Cable Assemblies, Protective Sealant, Punch Down Blocks, Compu-Shield, StackJacks™, Harmonica Jacks, Single Port Jacks, CableJack Connectors, SFP Transceiver, and MRJ21 Patch Panel. A "Download At-A-Glance" button is located at the bottom right of the grid. A "RoHS Compliant" logo is visible in the bottom right corner of the page.

**1** points to the "Capabilities" link in the navigation bar.

**2** points to the "Representative" link in the navigation bar.

**3** points to the "View High Res Image" link for the product shown in the main image.

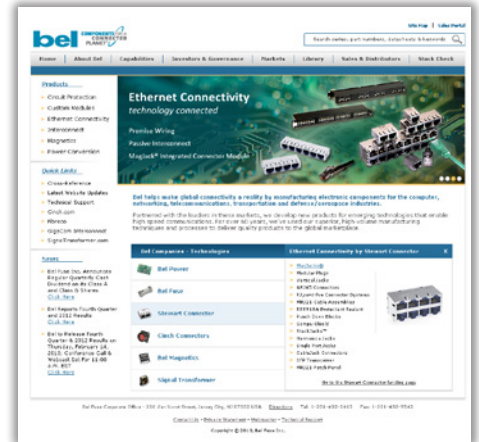
**4** points to the "Download At-A-Glance" button.

**5** points to the "CableJack Connectors" product category image.

## Stewart Connector Product Page RoHS Compliant

### Website Features

1. Stewart Connector Data Sheets
2. Design Features and Common Specifications
3. Other products that are synergistic to the product viewed
4. Available stock in distribution
5. Group Results in 5, 10 or All findings
6. Compare Results
7. Product Data Sheets



**Stewart Connector**

Search series, part numbers, datasheets & keywords

Site Map | Sales Portal

---

Home
Divisions/Brands
Contact Us
Library
Representative
Capabilities
Stock Check
Request Information

View High Res Image  
SS-60300-010 (shown)

### Single Port Jacks

Stewart Connector single port modular jacks are designed to meet the demanding requirements of high-performance communication environments including the increasing harsh environments that mobile electronics must operate in. Available in a wide variety of height configurations, there is a Bel Stewart single port right angle, vertical, angled jack that will provide the versatility and reliable solution for your networking or mobile applications. All of the Bel Stewart single port modular jacks can be equipped with EPP-918A contact dressing to increase the durability of the contacts to withstand heavy insertions and extractions of the mating plugs and provide increased protection in harsh environments.

**Specifications**

- Housing Material: UL 94V-0 rated glass-filled thermoplastic
- Contact Material: Copper Alloy
- Contact Plating: Selective gold plating in the contact interface
- Jack Tolerances and Dimensions: Compliant with all FCC requirements when plated with 50 (1.27 um) microinches of gold
- Current Rating: 1.5 A (maximum) @ 25° C
- Voltage Rating: 150 VAC (maximum)

**Design Features**

- Provides 100 grams (minimum) of Contact Normal Force
- Performance levels from CAT3 thru CAT6a
- A variety of shielding options to provide EMI/RFI protection
- Available in 4 through 10 positions with selectively loaded contacts for all configurations of RJ-11 and RJ-45
- Numerous keying options available on select models to match keyed plugs
- Available with customer specified single or bi-color LED's

Synergy with Single Port Jacks
Modular Plugs
EPP-918A Sealant
Bel Magnetics

Group Results in 5 10 All [Need Technical Support?](#) RoHS Compliant

Orientation	Performance	Shield	Shield Type	Contacts	LED	Port Opening	Flange	Package
<input checked="" type="radio"/> All <input type="radio"/> Horizontal (90) <input type="radio"/> Vertical (180) <input type="radio"/> Angle (45)	<input type="text" value="All"/>	<input checked="" type="radio"/> All <input type="radio"/> Non-Shielded <input type="radio"/> Shielded	<input type="text" value="All"/>	<input checked="" type="radio"/> All <input type="radio"/> No	<input checked="" type="radio"/> All <input type="radio"/> No	<input checked="" type="radio"/> All <input type="radio"/> No <input type="radio"/> Tab Down <input type="radio"/> Tab Up	<input checked="" type="radio"/> All <input type="radio"/> No <input type="radio"/> Through Hole <input type="radio"/> Yes	<input type="text" value="All"/>

[RESET ATTRIBUTES](#)

<p><b>Part Number:</b> SS-60000-009</p> <p><input type="checkbox"/> Select/Compare</p>	<p>Status: Active</p> <p>CAT6 Performance, Shielded, 8 Contacts, Tab Up Port Opening</p>	<p><a href="#">Stock Check</a></p> <p><a href="#">Data Sheet</a></p>
<p><b>Part Number:</b> SS-60000-010</p> <p><input type="checkbox"/> Select/Compare</p>	<p>Status: Active</p> <p>CAT6 Performance, Non-Shielded, 8 Contacts, Tab Up Port Opening</p>	<p><a href="#">Stock Check</a></p> <p><a href="#">Data Sheet</a></p>

3

5

6

1

4

2

7

www.belfuse.com

15

**Stewart Connector**

11118 Susquehanna Trail South  
Glen Rock, PA. 17327  
Tel 717-235-7512  
Fax 717-235-4675

**Local Support**

Our regional sales offices are ready to provide expert local applications and sales support. In addition, our extensive network of manufacturers' representatives and distributors help bring our solutions to you. Please visit us at [www.belstewart.com](http://www.belstewart.com) for a list of our regional offices or to find a local Bel Power representative.

**[www.belstewart.com](http://www.belstewart.com)**



**Bel Power Inc.**

2400 Computer Drive  
Westborough, MA 01581-1770  
Tel 508-870-9775  
Fax 508-870-9796

**Bel Stewart GmbH**

Industriestrasse 20  
61381 Friedrichsdorf, Germany  
Tel 49-6172-9552-0  
Fax 49-6172-9552-40

**Bel Fuse Ltd.**

8/F Luk Hop Industrial Building  
8 Luk Hop Street  
San Po Kong  
Kowloon, Hong Kong  
Tel 852-2328-5515  
Fax 852-2352-3706

**Bel Fuse Europe Ltd.**

Preston Technology Management Centre  
Marsh Lane, Suite F15, Preston PR1 8UQ  
Lancashire, UK  
Tel 44-1772-556601  
Fax 44-1772-561008